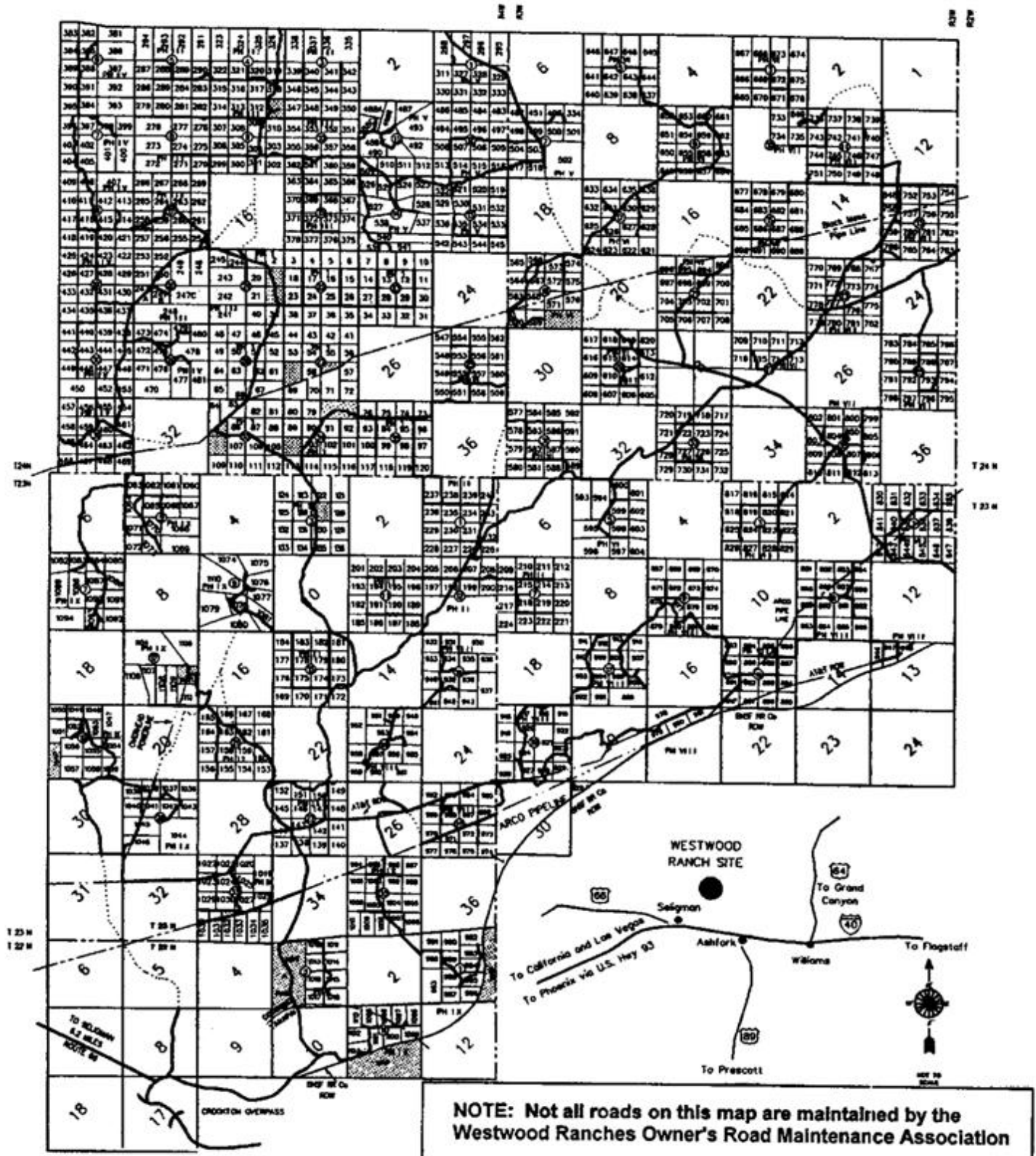


WESTWOOD RANCHES

LEGAL ACCESS ROADS—PHASE I THROUGH IX



- INDICATES EXCLUSION FOR CATTLE OPERATIONS
- INDICATES MAIN ARTERIAL ROAD WITH LEGAL ACCESS
- EXISTING ROADS NOT HAVING LEGAL PUBLIC INGRESS, EGRESS EASEMENT STATUS
- PIPELINE

A 30.00 FOOT PUBLIC ROADWAY AND UTILITY EASEMENT ADJACENT TO THE EXTERIOR BOUNDARIES OF ALL PARCELS AND SECTIONS OF WESTWOOD RANCHES HAS BEEN GRANTED TO THE PUBLIC.